

# Where is your child?

As you sit and watch your telly or drink your cup of tea, are you thinking of your children wondering where they might be.

Are they near the railway line? Maybe playing on the track? Do you realise it's possible they may never make it back.

Perhaps they're throwing stones at trains or placing debris on the line. A derailment makes one hell of a mess, it's only a matter of time.

Broken glass in the driver's face, his sight now lost for ever. Was it your child who threw the stone showing his mates he's clever?

No parent wants to believe the truth "My child could never do that". But if you don't know what they're doing how can you dispute the fact?

Children do play on the railway they regularly make the news. But only after being hit by a train. It's somebody's child, but whose?

Steve Woodman  
Conductor, Central Trains



**CRIME PREVENTION IS EVERYONE'S BUSINESS**

**REPORT IT PLEASE DON'T IGNORE IT**

CALL THE HOTLINE FREE IF YOU SEE ANYONE...

- Endangering lives
- Damaging property
  - Trespassing
- Dumping rubbish
- Throwing anything
- Acting suspiciously

...ON THE RAILWAY



The Track Off education campaign is funded by Rail Safety and Standards Board on behalf of the rail industry and associated organisations

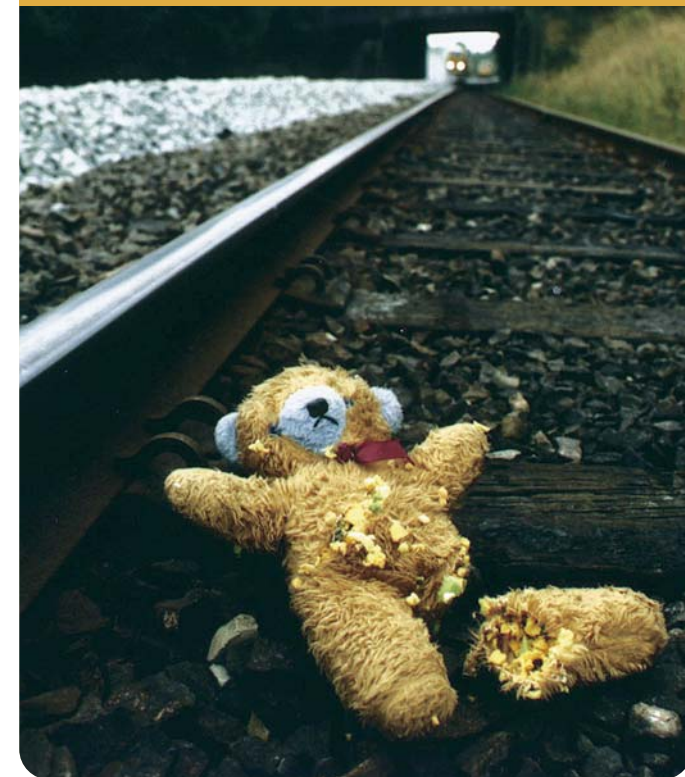
[www.trackoff.org](http://www.trackoff.org)

PC-I 11/07



# Where is your child?

Please help us to keep your child safe



Do you know where your child is...

...as you're reading this leaflet?

Please keep your children safe and out of trouble by knowing where they are and warning them of the consequences of misbehaving on or near the railway.

When they're not at school many children get bored and may be tempted to play on or near railway lines. Sometimes they take short cuts across the tracks, often following the bad example set by an adult.

They endanger their own lives and those of passengers and staff by hanging objects from bridges, placing them on the tracks or throwing objects at trains.

Objects do not have to be very big to create the potential for de-railing a train, causing injury and death.



Stone slab embedded in railway carriage roof



# It's a crime



Trespassing or carrying out acts of vandalism on the railway can have serious legal consequences and often end in tragedy.

### Did you know?

- Trespassing on the railway is a criminal offence.
- The maximum penalty for deliberately putting people's lives at risk on the railway is life imprisonment.
- The maximum penalty for damaging the railway is 10 years imprisonment.
- The maximum penalty for trespassing on the railway is a fine of **£1,000**.

Please help us...  
...to keep your child **safe!**

Every year children are killed or seriously injured misbehaving on the railway.

### Does your child know?

- Trains cannot stop quickly or swerve out of the way like a car. A train travelling at 125mph takes up to 1¼ miles (2000 metres) to stop.
- Many train routes are electrified and the electricity is never switched off.
- Overhead electricity cables carry a massive 25,000 volts - electricity at this voltage can jump across gaps and kill.
- Trackside live rails carry electricity at 750 volts - enough to injure or kill.

Children as young as 5 years old have been caught putting objects on the tracks.

Often younger children may be bullied into playing on or near the railway line.

The railway is **NOT** a playground.

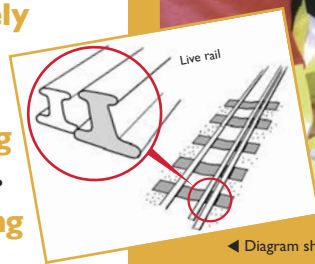


Diagram showing electrified third rail