

Activity



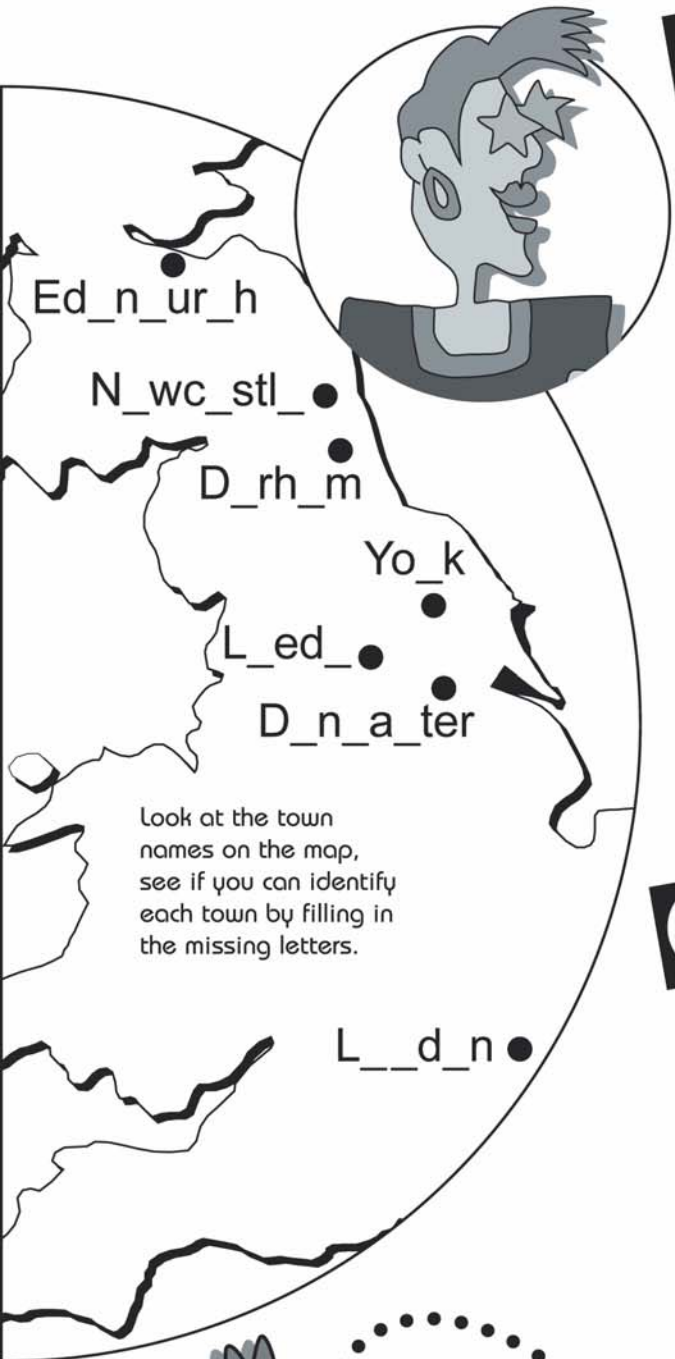
Name: _____

Q

You're visit to an art gallery.

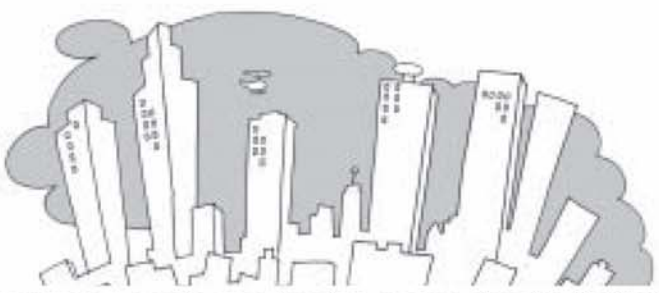
The art gallery tour in Newcastle starts at 2:00pm and finishes an hour later. What time do you have to leave home in Doncaster to arrive in Newcastle in time for the tour?

Answer



Look at the town names on the map, see if you can identify each town by filling in the missing letters.

Q



How many people use trains every day in Britain?

- 100,000
- 700,000
- 3,000,000



It's a fact!

A high speed electric train in France reached a world record speed of 322mph (515.3kph) in 1990

A train travelling at 125mph takes 2,000 metres to emergency stop - that's the length of 20 football pitches. If you're in its way you've no chance!

