

What happens to robbers?

- Arrested and put in handcuffs
- Taken to the custody suite of a police station and details taken
- Charged with an offence
- Fingerprints and DNA sample taken
- Put in a cell

What kind of a sentence?

- Different sentences for theft and robbery - robbery is theft with violence or the threat of violence
- Theft: Magistrates' Court sentence - up to 6 months in prison and/or fine
- Theft: Crown Court sentence - up to 7 years in prison and/or fine
- Robbery: Crown Court sentence - up to a maximum of life imprisonment



What is difficult with a criminal record?

- Visiting many countries such as the USA or Australia
- Getting a credit rating to buy a car, house and much more
- Getting any job easily or certain jobs at all such as:

Police officer

Working with children

Teacher

School caretaker

Doctor

Civil servant

Nurse

Probation worker

Chemist

RAF, Navy, Army

Social services worker

+ many, many more



CRIME PREVENTION IS EVERYONE'S BUSINESS

REPORT IT PLEASE DON'T IGNORE IT

CALL THE HOTLINE FREE IF YOU SEE ANYONE...

- Endangering lives
- Damaging property
 - Trespassing
- Dumping rubbish
- Throwing anything
- Acting suspiciously

...ON THE RAILWAY



The Track Off education campaign is funded by Rail Safety and Standards Board on behalf of the rail industry and associated organisations

www.trackoff.org

S-15 11/07

TRACKOFF

Preventing Robbery

Together we can beat it



What should you do to prevent robbery?

There are basic precautions you should take before and during a train journey to avoid being a robbery victim.

If you are robbed, or witness a robbery, there are certain things you should remember in order to help

British Transport Police catch the robbers.

With the increase in digital CCTV cameras and number of police patrols many more robbers face the consequences of their actions. With your help the number of robberies will reduce and even more robbers will be caught.



What are the targets?

- Mobile phones, especially the latest models, represent 61% of all items stolen
- iPods and other music players
- Cash and jewellery

Who are the victims?

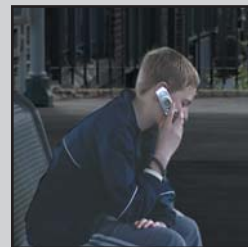
- 80% are pupils travelling on the train to and from school
- 55% of the victims are aged 14-19 years

What should you do before you travel?

- Mark personal items with postcode/house number using a UV pen
- Note your mobile's IMEI number - dial *# 0 6 # on your mobile to find it
- Register your mobile at www.menduk.org

What should you do when travelling?

- Try not to be on your own and avoid dark areas in stations
- Be aware of who is around - robbers can be quick
- Stay close to CCTV cameras
- Keep any property, cash and jewellery hidden
- Use an old mobile and black earphones for your iPod
- If you are alone on a train, move to another carriage



What should you do after a robbery?

- Tell an adult or call the police
- Write down all you can remember immediately
- Give a full account to a police officer



What should you remember about the robbers?

- Height, build, age
- Hair colour and style
- Nationality, ethnic origin, skin colour, tattoos
- Headgear - type, colour, motif
- Facial features, glasses, earrings, jewellery
- Clothing - designer gear
- Voice - What was said, use of names, accent



What should you remember about the robbery scene?

- Place and time
- Witnesses and their names/contact details
- If there were any CCTV cameras nearby

What should you remember about forensic evidence?

Items thrown away or left behind by the robber:

- Sim cards, papers, membership cards
- Used bottles, cans or cups
- Chewing gum and spit
- Cigarette butts

What the robber touched:

- Clothes
- Hand rails
- Doors

