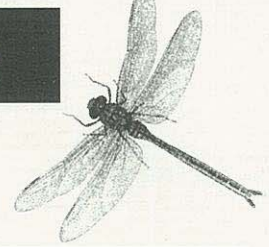


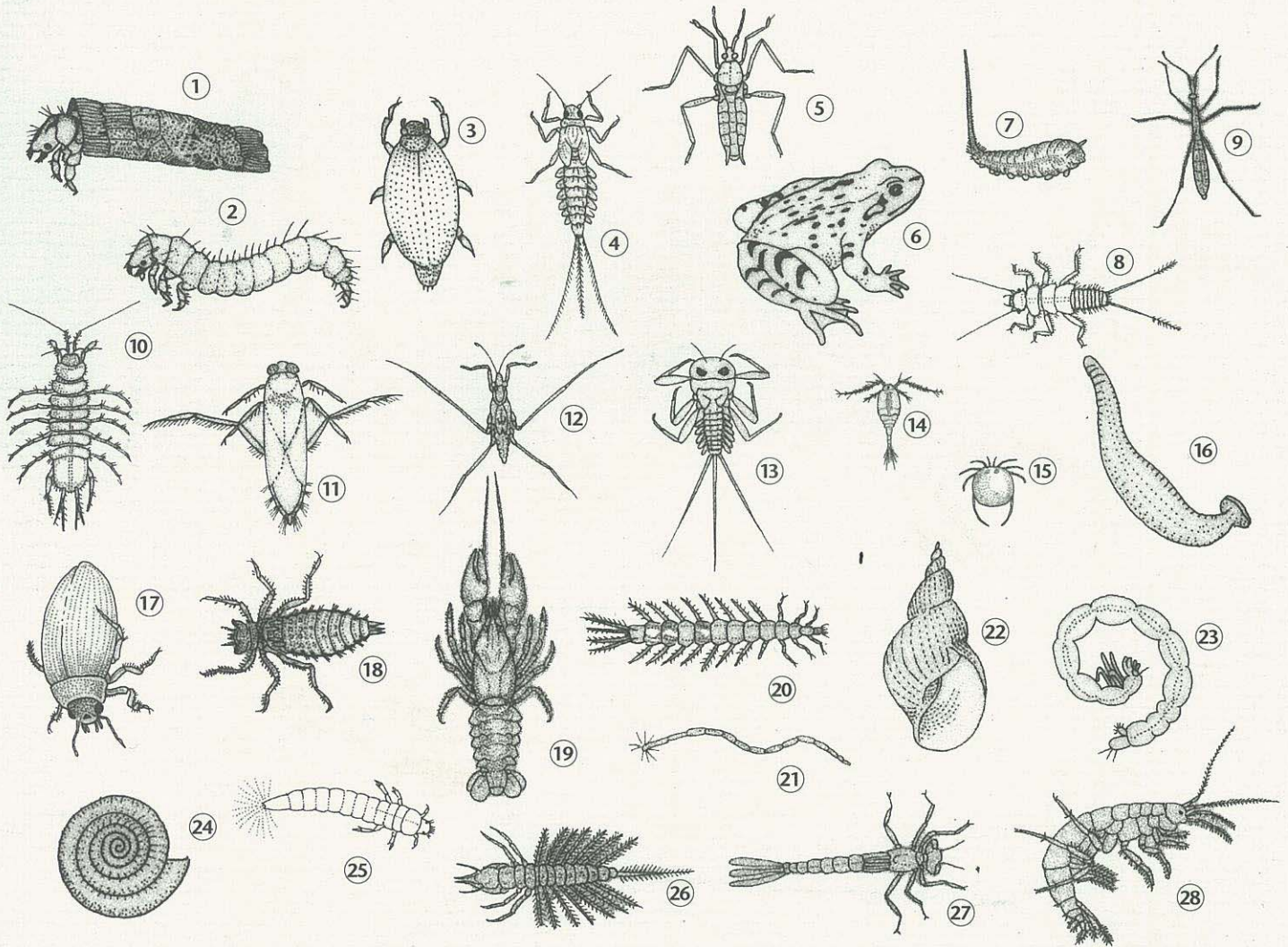
# Freshwater Detective

## Spot the Bugs & Grubs



Freshwater invertebrates are small animals that live in rivers and ponds. There are hundreds of different types of invertebrates, some are shown below - see if you can find the name of the eight that we have not identified.

- |                         |                          |                           |                    |
|-------------------------|--------------------------|---------------------------|--------------------|
| 1 _____                 | 8 _____                  | 15 Water Mite             | 22 Pond Snail      |
| 2 Caddisfly             | 9 Water Measurer         | 16 _____                  | 23 _____           |
| 3 Whirligig Beetle      | 10 _____                 | 17 _____                  | 24 Ramshorn Snail  |
| 4 Swimming Mayfly Nymph | 11 Greater Water Boatman | 18 Dragonfly Nymph        | 25 Beetle Larva    |
| 5 Water Cricket         | 12 Pond Skater           | 19 Crayfish               | 26 Alderfly Larva  |
| 6 Frog                  | 13 _____                 | 20 Whirlygig Beetle Larva | 27 Damselfly Nymph |
| 7 Rat-Tailed Maggot     | 14 Water Flea            | 21 Midge Larva            | 28 _____           |



These animals can tell us a lot about the quality of the water they are living in. Each of the different types of invertebrate react differently to pollution with some, like stoneflies, being very sensitive and only living in clean water and others, such as midge larvae, being able to live in dirty water. Biologists at the Environment Agency collect samples of invertebrates to help us assess the quality of the water.